

# APPLICATION OF CAUSE-AND-EFFECT-ANALYSIS FOR EVALUATING CAUSES OF FIRE DISASTERS IN PUBLIC AND PRIVATE SECONDARY SCHOOLS IN ILORIN METROPOLIS, NIGERIA

A.E, Ilori\* ; B.A, Sawa and A.A Gobir

Centre for Disaster Risks Management and Development Studies, Ahmadu Bello University, Zaria, Nigeria

**Keywords:** Fire disaster, Fishbone-analysis, Ilorin metropolis, Secondary school.

## ABSTRACT

The contributions of fire disaster to the varying degrees of students', staff's and schools' property and/or lives lost in secondary schools in Nigeria is recently alarming. The study assessed causes of fire disaster in public and private secondary schools in Ilorin metropolis, Kwara State, Nigeria. The objectives were to identify latent causes of fire disaster, use fishbone diagram to illustrate and analyze root cause of fire disaster in secondary schools. Exploratory research strategy was used. The target population was 18 senior public and private secondary schools, Ilorin having 18 principals, 965 teachers and 3765 Senior Secondary 2 students. From the [targetse](#) population, simple random sampling technique through a pick and not-return balloting was employed to sample 72.22% of the principals, 14.8% each of the teachers and students. Data were collected through in-depth interviews, questionnaire, participatory observation checklist, and were analyzed using cause-effects-analysis. The findings reveal fire disasters in public and private secondary schools in Ilorin metropolis are primarily caused by bush/waste burning, electrical fault/wiring, arson, carelessness, and alcohol, smoking. Results also showed that the root-causes of fire phenomenon from the classic categories were setting undergrowth on fire, non-insulated wiring system and sparks from wrong connections, emotional induced from cultism rivalry among male teachers and students over a girl and superiority within and outside the school, mishandling of

chemicals in various laboratories during experimentation, and lack of proper fencing of school compound. The study recommends that schools in the metropolis should prepare and anticipate future fire tragedy. Consequently, since there are several factors responsible for fire incidents, further studies could be conducted to clarify the sequence or magnitude of each cause of fire outbreak.

## INTRODUCTION

Fire disaster has become a global prevalent disaster experienced in most public and private secondary schools and other learning institutions with likely no country is exempted from this disaster whether developed or developing. Lending credence to this, not fewer than 43% of 938 secondary schools surveyed by the Arson Control Forum ACF (2006) in United Kingdom recorded large numbers of fire incidents between 2003 and 2006 alone. Kenya, a developing country in Africa has fire disaster as a common phenomenon experienced in secondary schools and other learning institutions (Kirui, 2009; Akumu, 2013; Shibutse, Omuterema, and China, 2014b). The National Fire Data Center (NFDC) in 2007 reported that, Africa is one of the continents recording a number of fire incidents across its regions partly due to several different reasons such as lack of preparedness and limited awareness programs among the citizenry and some key institutions.

Literature on causes of fire disasters has drawn ns substantive conclusion that the rapid growth of fire disasters in secondary schools and learning institutions -fires are eminentlymajorly linked to different reasons. One of the factors is arson which Ilori (2017) defined as a deliberately fire set by an individual or group of persons on private or public properties, mainly in a form of protest or vengeance against institutions or government. According to Tolofari (2010) some fire outbreaks are caused by some individuals with malicious intent to show displeasure or create destruction.

Arson was a cause of secondary schools fires in Kenya (Shibutse *et al.*, 2014a; Kisurulia, *et al.*, 2015), as an expression of dissatisfaction with the school administration (Nderitu, 2009).

Kahwa (2009) and Anyanwu *et al.* (2016) in their studies found faulty electrical installations, use of ~~un~~not-qualified electrical engineers during installation (Muzungu, 2008), use of substandard electrical materials to save cost (Jimoh, 2012), overloading of electrical appliances and maintenance of electrical wiring (Rubaratuka, 2013), as the cause of fires. Careless use of gasoline and naked flames such as candle, filling-up kerosene lamp tank while the lamp is ~~lit~~ (Jimoh, 2012), cooking materials, lighting devices like lanterns, cigarettes, and lighted mosquito coils (Simpson, 2010), are some of the causes of fire disasters. For example, fire outbreak from candle used by a student to study at night took 12 girls lives and left 15 others injured in a secondary school dormitory in Tanzania (Daily Newspaper, 2009).

Other causes of fire incidents identified by researchers include bush/waste burning (Shibutse *et al.*, 2014a), alcohol, drugs, and smoking which was one of the causes of fire disaster in Nepal in a survey carried out by Gautam (2011). Hall (2012) maintained that smoking-related materials have been historical cause of different fire deaths in the United State. Reinforcing this fact, Abu (2013) reported that 75% of fire outbreaks in Ghana are caused by smoking and use of drugs.

The incidents of fire-outbreak in Nigeria are grossly increasing every year ranging from different locations like residential buildings, warehouses, learning institutions and so on. Fire disasters situation in learning institutions precisely secondary schools are worrisome due to its persistence without cessation. Fire incidents in Nigeria are so incessant to the extent that they occur on a daily basis (Adamu, 2013), with enormous contributions, amplifying toll of death and property loss among students and staff in public and private secondary schools. Notable among these incidents in Nigeria include that of the year 2001 when a public secondary school in Bwalbong-Gindiri

village, Plateau State, recorded 23 deaths among its students. In addition, the school segregated for girls in the aforementioned village had 40 students been injured. In the incident, students were trapped in the dormitory because it was locked and chained with iron bars and a chain (The Independent Newspaper, 2001).

In a similar event, the fire outbreak in Government Girls College in Jogana, Kano State in November, 2015 ~~experienced~~ claimed the lives of 7 female students and left 21 others injured (Mohammed, 2015). Similarly, important documents including class register, records of students, books, some learning aids were reduced to ashes by fire in 2016 in a section of Ogbe Secondary School, Edo State (Ibileke, 2016). Books and other properties of students were lost to a fire that ravaged entire 2 blocks of female hostels of Federal Government College, Keffi, Nasarawa State in November, 2017 (Premium Times, 2017). In December, 2017, fire ~~raid~~ ~~burnt down~~ a hostel in Government Science Secondary School, Kware, Sokoto State. In the same vein, students' valuables in the four-room of A'isha hostel, ~~of~~ a public secondary school exclusively meant for girls in Maberu, Sokoto State were completely devastated by fire from ~~an~~ electric sparks in January, 2018 (Punch Newspaper, 2018).

**Comment [N1]:** Aisha or A'isha?

Ilorin, the capital of Kwara State has over the years attracted migrants from various parts of the country. Reasons for such migrations maybe partly down to its strategic location as a gateway between the northern and southern parts of the country (Usman, Malik and Alausa, 2015). The religious intolerance experienced in the northern parts of Nigeria in the late 90s (Ahmed, 2005), the insurgency in north-eastern parts of the country (Ibrahim, Adetona and Olawoyin, 2014; Usman et al., 2015), and the recent herdsmen activities has contributed to the influx of people in the city. Human errors are one of the major contributory factors to fire outbreaks. Demand and

careless use of facilities and utilities such as gas cooker, electrical appliances and so on, in public and private secondary schools along with nearby houses.

However, losses emanating from the fire incidents in public and private secondary schools in Ilorin metropolis are very alarming. For instance, 3 fire disaster events purported from sparks of working generator~~s~~ and setting undergrowth on fire by unknown persons in 2012 resulted in the loss of properties worth ₦ 6,600,000 million naira at St. Mary International School, and Cherubim and Seraphim College, Ilorin between 2015 and 2019 in Kwara State Fire Service'~~s~~ Headquarters, 2019 annual report. These huge losses are clear evidence of lack of preparedness, sense of urgency and mode of prevention (Pascal, 2006).

Despite the fire incidents and losses incurred, researchers have been working relentlessly to provide different models and analytical tools to ~~explain~~ establish logical solutions to fire outbreaks. For instance, Oladokun and Emmanuel (2014) invoke~~d~~ fuzzy logic model to analyze~~d~~ urban market fire disasters~~s~~ management in Nigeria while Oladokun and Ishola (2010) used a risk analysis model to explained fire disasters situation in commercial complexes in Nigeria. The purpose of providing such tool(s) is/are to assist in unveiling the key causes of fire disasters, take results oriented actions for prudent management and continuous improvement on fire situations (Balanced Scorecard Institute, 2007; Tarun, 2012). Therefore, this study sought to find out “the cause-and-effect-analysis (fishbone-analysis)” along with its application to latent analysis and causes as well as proposing solutions to fire incidents and cost of property loss in public and private secondary schools in Ilorin metropolis.

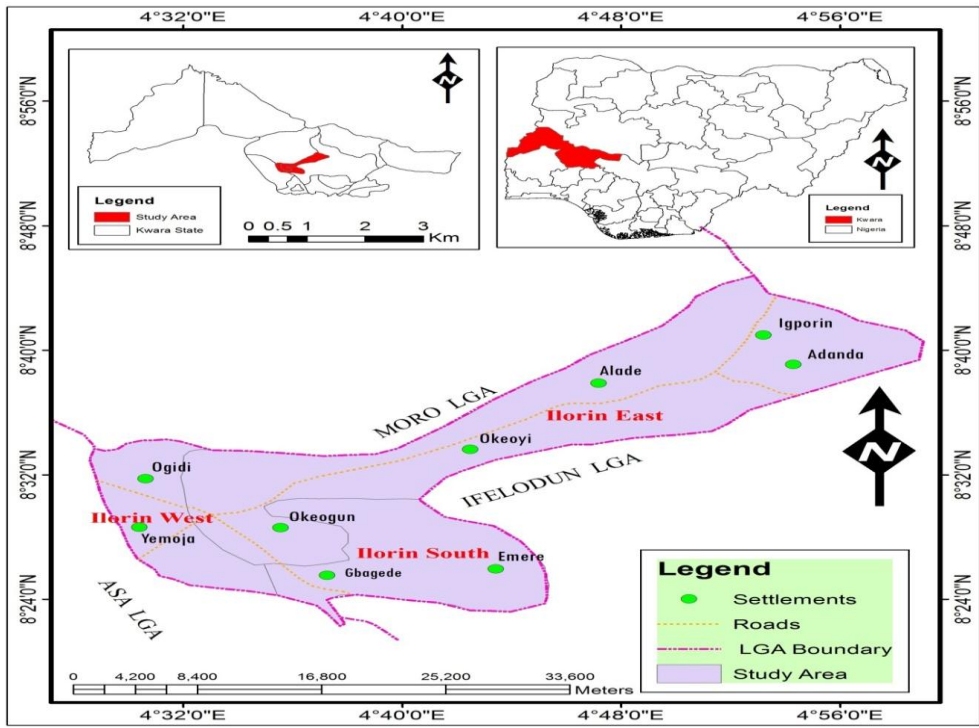
## **MATERIALS AND METHODS**

### **Study Area**

Ilorin Metropolis is located between latitude 8° 24' 0" N and 8° 56' 0" N of the Equator and between longitude 4° 32' 0" E and 4° 56' 0" E of the Greenwich Meridian with an elevation of 290m above sea level. It lies on the southern fringes of savanna region and north of the forest zone of Nigeria. The city is situated in the north central geo-political zone with a land mass of 100km<sup>2</sup> (Adediji, Ajayi and Olawole, 2009; Usman et al., 2015). The metropolis has 20 political wards, and comprises of three Local Government Areas (L.G.As) namely: Ilorin East, Ilorin South, and Ilorin West.

Ilorin is a fast growing city in Nigeria with high growth rate. The city is a confluence of cultures, primarily dominated by Yoruba, Hausa/Fulani, Nupe, Baruba, Igbo whilst the minors are other native, and foreigners. The indigenous people's religion is predominated by Muslims and Christians. Major occupation of Ilorin indigenes is weaving, pottery, petty trading, blacksmithing, and farming. Large number of people in the area are into enterprises, civil services, and corporate services such as estate agents, bankers, and so on. Presence of social and physical amenities in Ilorin give rise to different urban development like expansion and establishment of more public and private secondary schools by private organization and state government. Ilorin metropolis has 64 public and 45 registered private senior secondary schools with 52,687 key element population i.e. 47,568 students, 5010 teachers, and 109 principals/head teacher (Ministry of Education and Human Capital Development MOEHCD, 2017). Significant increase in population in recent years have contributed to different human errors such as careless use of gas cookers and electrical appliances in schools and houses close to schools. [These human errors could be linked to growing demands or needs of the growing population.](#)

Data used for this study were obtained from both primary and secondary sources. Primary source of data were collected from principals/vice-principals through an in-depth interview, teachers and students through the use of questionnaires, and participatory observation. The data include information on causes of fire disasters and the physical outlook of public and private secondary schools surroundings. The secondary data was sourced from Kwara State’s Ministry of Education and Human Capital Development (MOEHCD) for population of secondary schools in Ilorin metropolis. In addition, Kwara State Fire Service Headquarters (KSFSH) further provided detailed data on cases related to fire incidents in secondary schools, as well as Kwara State Ministry of Lands and Surveying for map of the study area presented in Figure 1.



**Figure 1. Kwara State showing Ilorin Metropolis**  
**Source:** Adapted from Kwara State Ministry of Land and Survey (2017)

Formatted: Centered

This study adopted exploratory research strategy. The target population constituted 18 senior public and private secondary schools having 18 principals, 965 teachers and 3765 SS 2 students (MOEHCD, 2017). From the target population, an attrition rate of 92.57% (or 343 persons) was added to the sample size of 370 persons obtained from Bartlett et al. (2001) sample size determination table under 0.05 precision to obtain an overall sample of 713 persons. Out of the 713 persons sampled, 1.83% was purposively set aside for principals that were randomly sampled and interviewed. For other 700 persons, a proportionate stratified sampling technique according to Goel (2014) was used to justify 20.43% of the teachers and 79.57% of the students' respondents that were randomly sampled and helped in identifying the causes of fire disaster in public and private secondary schools in Ilorin. From 700 questionnaire administered, 645 questionnaire representing a response rate of 92.14% were suitable and used for analysis.

However, Cause-and-Effect-Analysis (CEA) model was used to evaluate the causes of fire disaster in the region (Balanced Scorecard Institute, 2007). The “fishbone diagram” known as a CEA model is a graphic tool used for identification, sorting and exhibition of potential causes of a problem (Institute for Healthcare Improvement IHI, 2016). The name “fishbone” emanates from its structural outlook and appearance (Tarun, 2012). The study further asserts that in a typical fishbone diagram, the main problem which is required to be resolved is linked to the head of the diagram, the causes are related to the bones and the smaller bones are created and used as sub-causes.

Fishbone diagram or analysis was used to evaluate the causes, sub-causes and aid to uncover the symptoms of fire disasters in public and private secondary schools in Ilorin (American Society for Quality, 2005). In other words it was used to graphically illustrate the relationship between fire disaster and the causative factors (IHI, 2004). Henrik (2009) described cause-and-effect-diagram



as a simple and pragmatic way of doing root cause analysis. The essence of using this model was to identify the root causes of fire disasters in public and private secondary schools in Ilorin metropolis. The study therefore considered this model as useful to achieve the specific objectives of this study. The model has not being explored by other researchers in fire disaster incidences and safety management. To construct the fishbone diagram, the following steps identified in Ishikawa (1968), Brassard (1988), Vivek (2008) and Tarun (2012) were adapted. The steps were:

- i). Fire disaster (i.e. effect) was written in a box on the right-hand side of the page (fish head).
- ii). A horizontal line (spine) was drawn to the left of the effect.
- iii). Diagonal lines were drawn above and below (these are the fish bones) the horizontal line (spine), and were labeled with the categories chosen in 4 below.
- iv). The main categories of factors (causes) contributing to fire disaster identified were labeled. The major categories typically utilized were electrical fault, arson, carelessness, bush/waste burning, and drugs (including alcohol and smoking).
- v). List of causes for each category was generated, and branch bones off the fish bones connecting the causes to their respective categories were drawn to produce sub-factors.
- vi). Analyzes of the results were done after an adequate amount of detail has been provided under each major category.

Formatted Table

**Box 1: Steps for Constructing Fishbone Diagram**

Formatted: Centered

## RESULTS AND DISCUSSION

This section presents results on the main aim of this study which sought to determine the root causes of fire disasters in private and public secondary schools in Ilorin Metropolis. Fishbone analysis is a good way of revealing an inside picture of a particular problem. In this section, the first of all a general fishbone analysis model employs ~~was done by drawing first the fish bone with~~ the five contributing factors of several fire incidents in public and private secondary schools identified by the respondents and interviewees. The root-causes ~~the groups~~ itemized by the target groups were placed accordingly against the primary factors. ~~From there,~~ the second fishbone analysis illustrated in the figure below (fig.3) were ~~designed~~ done by placing the ~~cutting~~ main problem (fire disaster) on ~~into~~ the head of the second diagram. The various primary causes as well as the root causes of fire incidents identified in public and private secondary schools in Ilorin metropolis are presented in ~~Figure~~ fig.3. The major causes depicted in the models constitute: bush/waste burning, arson, electrical fault/wiring, carelessness, and alcohol, drugs and smoking alongside solution to these problem were presented in this section.

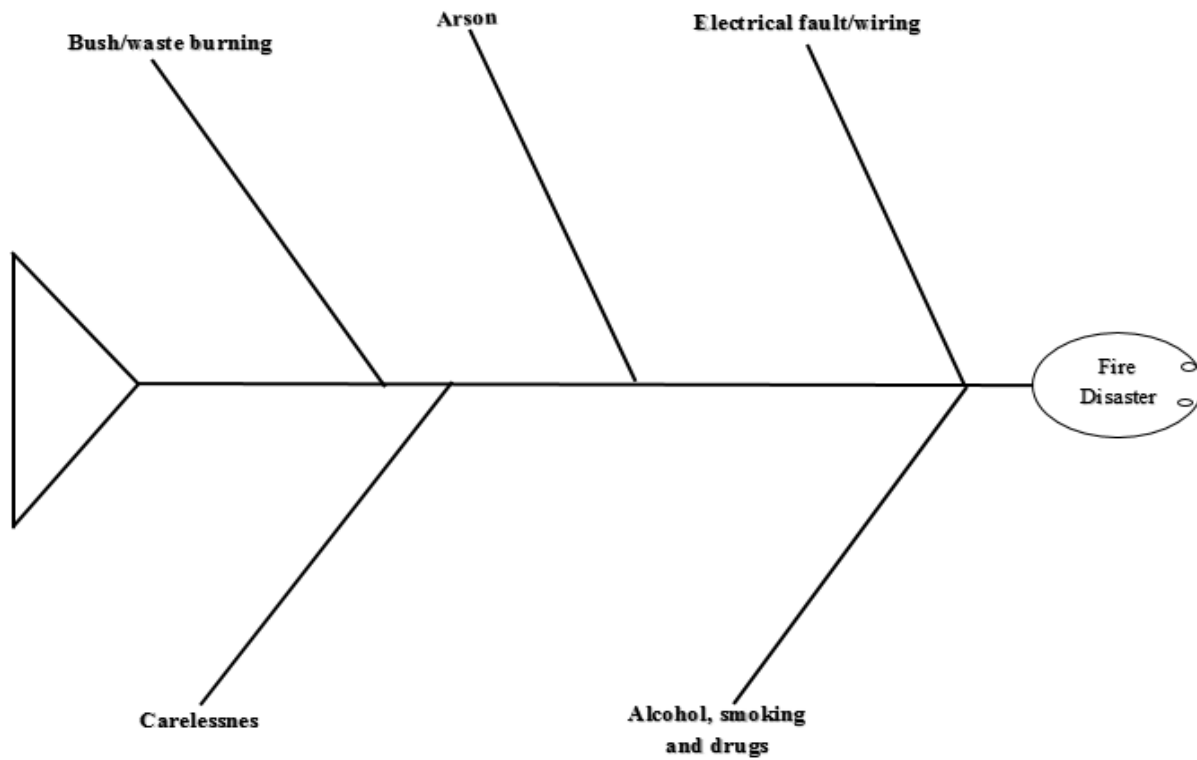


Figure 2: Fishbone Diagram of Primary Causes of Fire Disasters

Formatted: Centered

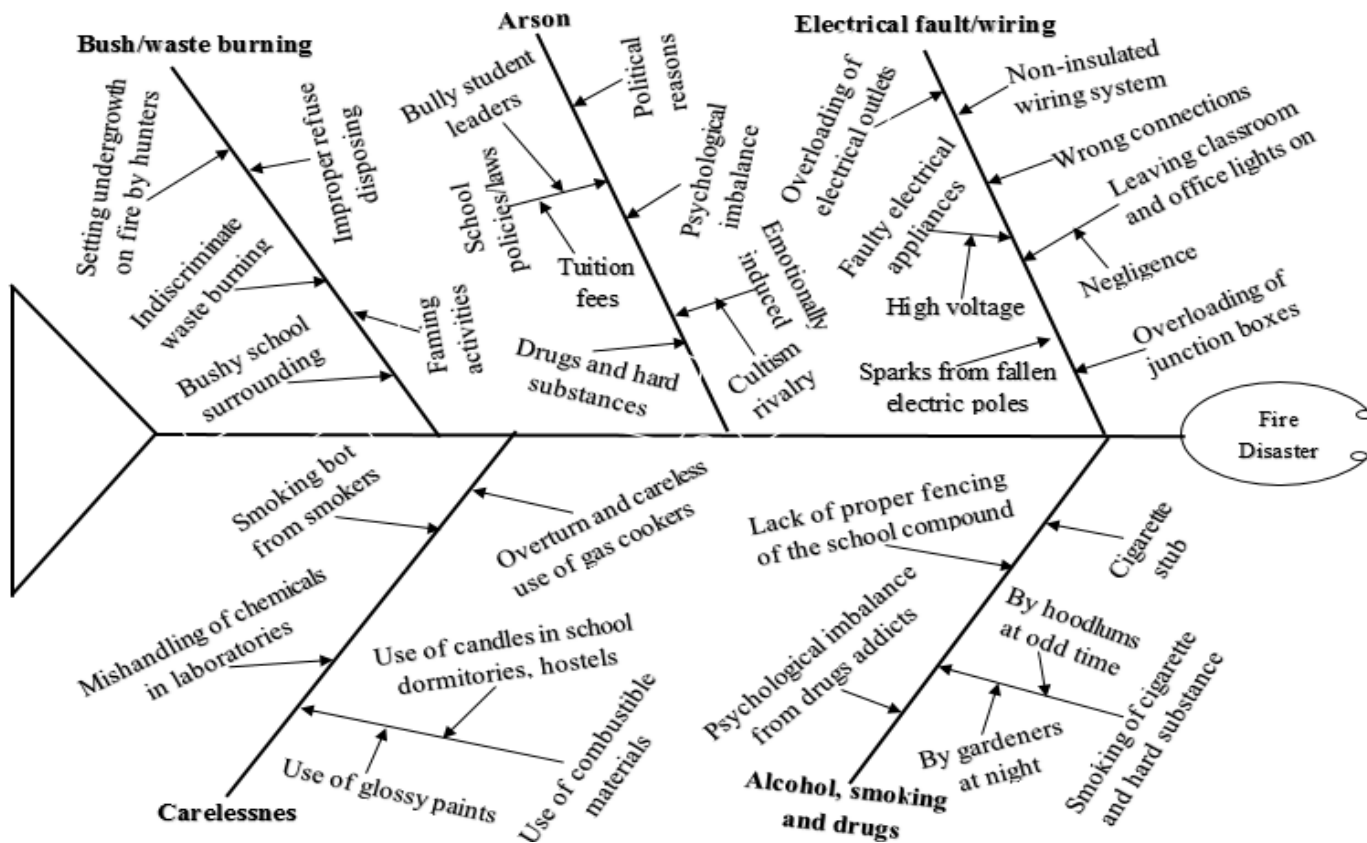


Figure 3: Fishbone Diagram for Causes of Fire Disasters in Public and Private Secondary Schools in Ilorin Metropolis

**Comment [N2]:** If the fish bone diagrams and the root causes of fire disasters stated in there are from the survey fine. If any of them was adopted from a study kindly cite (Source) the paper that used this model which served as the basis/underlying theory for this study.

## Major causes of Fire Disasters in Public and Private Secondary Schools in Ilorin

### Metropolis:

**Comment [N3]:** It is advisable to have headers like this to guide readers on what each section contains and not just go straight into discussing the causes.

#### **Electrical fault/wiring Problem:**

Usage of electrical appliances for day-to-day activities are good but bears some consequences when not properly used. Findings show faulty electrical appliances, wrong connections, overloading of electrical outlets, sparks from fallen electric poles and so on have been endangering lives and especially property of students, teachers and school valuables in public and private secondary schools Ilorin metropolis. For instance, properties worth over ₦2million naira were destroyed in a fire incident at St Mary International College, Ilorin in 2012 as a result of sparks from a working generator (KSFSH, 2019). Citing electrical problems in public and private secondary schools in Ilorin as case scenario through study observation reveals the root causes of these problems could be attributed to non-insulated wiring system, overloading of junction boxes in some classes, computer laboratories coupled with leaving classroom and office lights on even after school hours from negligence. Sparks happened from high voltage leading to fire disaster when bulbs were not put off and when overloaded boxes were heated and could no longer bear the loads.

#### **Bush/waste burning Problem**

Bush/waste burning has been one of the problems faced by public and private secondary schools in Ilorin from indiscriminate waste burning in nearby houses, school premises and immediate environs particularly during the dry season. Setting undergrowth on fire by hunters amongst others are other root causes of some fire disasters in public and private secondary schools in Ilorin resulting to huge losses and destruction of personal and public properties. An example of

huge loss from bush/waste burning in secondary schools in Ilorin were fire incidences in 2015 and 2019 at Cherubim and Seraphim College, Ilorin. Properties worth ₦4, 100, 000 million naira were lost to this phenomenon (KSFSH, 2019).

### **Arson Problem**

Arson (intentional fires) is a fire deliberately set by an individual or group of persons on private or public properties, mainly in a form of protest or vengeance against institutions or government (Ilori, 2017). Some fire outbreaks in public and private secondary schools in Ilorin are caused by some individuals with malicious intent to show displeasure or create destruction (Tolofari, 2010). Public and private secondary schools in Ilorin are not free from arson. Fires set up are engineered politically or psychologically through the use of drugs, hard substances or when individuals are psychologically depressed. Resultant fires may be emotionally induced from cultism rivalry among male teachers and students over a girl or superiority within and outside the school. Other root factor is school policies/laws with sub-causes such as tuition fees and student leaders fond of bullying other students. On arson caused fires, KSFSH (2019) documented that arson suspected individuals gutted Government High School, Ilorin on fire in November 2012. The culprits could probably do so to show dissatisfaction due to one or more of the aforementioned reasons.

### **Carelessness Problem:**

Some public and private secondary schools in Ilorin has experienced some form of destruction from carelessness. Carelessness is as result of different reasons linked to mishandling of chemicals in various laboratories during experimentation, nonchalant dropping of smoking bot by smokers, overturn and careless use of gas cookers amongst others. Careless use of

combustible materials like the use of candles in school dormitories, hostels, glossy paints and other combustible materials for decoration and beautification of offices, classrooms and hostel rooms. For instance, during visitation to schools some students at Cherubim and Seraphim College, Ilorin were jokingly discussing between themselves how one of them played with fire which later escalated beyond his expectation. Carelessness is a contributory factor to fire outbreaks in most public and private secondary schools resulting to loss of lives, personal and public properties.

#### **Alcohol, drugs and smoking Problem:**

Lack of proper fencing of the school compound has resulted in the intrusion of drug addicts and smokers at odd periods. Improper disposal of cigarette butts and stub, leakage of fuel from school buses as itemized by 23% of the principals interviewed were notable root causes of fire disaster in public and private secondary schools in Ilorin. Per observation, some hoodlums often smoked in the evening after school hours. Furthermore, findings show 61.11% of public and private secondary schools in Ilorin are partially or not fenced. Partially and not fenced school compound has made intrusions so easy for the drug addicts and smokers in the area. Of which, during visitations some classrooms were seen littered with pieces of papers which are potential fuel of fire disaster.

#### **Problems and SolutionsTarget-oriented measures to curb root causes of Fire Disasters in Private and Public Secondary Schools in Ilorin Metropolis:**

Several factors are responsible for fire disasters in public and private secondary schools in Ilorin metropolis. It is much important for schools to take quick action to avert future fire even though the incident is few in secondary school within the metropolis but the emerging losses from the

**Comment [N4]:** I suggest this caption is rather appropriate than problems and solutions. Please try to rephrase some other section-headers to improve the structure of this manuscript.

few incidents are in millions of naira. Hence, for the safety of lives and property of students, teachers, principals, the school itself and other users here are some solutions to that can help schools in improving the safety.

#### **Solutions of Electrical fault/wiring Problem:**

To get rid of these electrical fire problems in public and private secondary schools in Ilorin, conscientious efforts and actions must be taken. Amongst such efforts are: ~~such as~~ putting off all electrical appliances like computer systems, fans, electric kettle, cookers, socket and air-conditioning systems when not in use at the laboratory, kitchen, hostel and offices ~~even for a short moment~~. By so doing sudden sparks from high voltage that causes alarming destruction to lives and property will be prevented. Replacing burnt fuses with cables of higher melting point personally may result into a great fire disaster hence; trained engineers/qualified electrician(s) should be employed by each school to fix electrical problems.

#### **Solutions of Bush/waste burning Problem:**

The remedy to this may include; clearing of school compounds ~~against bushy environment~~, strict punishment on ~~any~~ students s and ~~even~~ teachers s who litter ~~red~~ the school compound, provision of waste bins in various ~~all~~ classrooms, staff common rooms, and ~~strict~~ restriction of hunters and herders getting access to school compounds. Refuse dump should be managed effectively ~~far to school buildings~~.

#### **Solutions of Arson Problem:**



To curb arson problems, proper and full fencing of school compound with secure gates and placement of security men at the entrances would help schools in reducing such crime and also help to bring culprits to book.

#### **Solutions of Carelessness Problem:**

Carelessness can be prevented ~~among other methods~~ by making matches sticks available to light gas burners in kitchens and laboratories ~~before turning on the burner~~. Adding to this, keeping gas cylinder outside kitchens and laboratories would help the flow and leakage into the air outside the laboratories and kitchen to prevent sudden explosion from careless use of this equipment. Avoidance of use of combustible materials such as papers for decoration. In any circumstance if petrol must be stored, it should be kept far away from kitchen, lantern or candle light.

#### **Solutions of Alcohol, drugs and smoking Problem:**

To tackle this drug addict act in or around public and private secondary schools in Ilorin, full fencing of school compound with secured gates and recruitment of experienced security men at ~~various~~the entrances. This would help schools in reducing fire disaster eventualities from the perpetrators. Prohibition of smoking within and around ~~the~~ school premises ~~especially~~ during school hours by school users should viscosly be enforced. School management should consistently monitor ~~a~~ school drivers ~~who~~that engaged in smoking or take in~~that takes~~ alcohol.

#### **LIMITATIONS OF THE FISHBONE ANALYSIS:**

Fishbone analysis is a tool that efficiently helped in identifying the ~~causes and the~~ root-causes of fire disaster in public and private secondary schools in Ilorin as well as providing solutions to

solve the problems. Despite its efficiencies, it has some drawbacks. One of the key-Some of limitations of the model states that the drawbacks are; fishbone analysis model does not isolate major issues of the problems and presents each in a same way (Tarun, 2012). Fishbone analysis outlines the causes of fire disasters in the area but it does not clarify the sequence and magnitude of the primary causes (Public Health Infrastructure, 2008). Fishbone analysis also fails to satisfy the ambiguity of severities and contributions of each primary factors on fire menace in the area.

## CONCLUSION

Based on the results of this study, application of cause-and-effect-analysis for evaluating causes of fire disasters in public and private secondary schools in Ilorin metropolis, the following conclusions were drawn:

- i. The main challenge with huge cost of property loss faced by schools and its users in Ilorin metropolis were attributed to fire disaster.
- ii. Analysis of different classic categories of the fishbone outlined that bush/waste burning, electrical faults, arson, carelessness, and alcohol, drugs and smoking are the primary causes of fire phenomenon.
- iii. Results also showed that the root-causes of fire phenomenon from the classic categories were: setting undergrowth on fire, non-insulated wiring system and sparks from wrong connections, emotional induced from cultism rivalry among male teachers and students over a girl and superiority within and outside the school, mishandling of chemicals in various laboratories during experimentation, lack of proper fencing of school compound, and so on.

## RECOMMENDATION

Based on the outcome of this study, the following recommendations are made:

- i. Laboratory attendant/assistants and teachers should monitor students ~~in the laboratories~~ during practical sessions.
- ii. Overloading of electrical outlets like plugs and sockets should be avoided.
- iii. School compound should be fenced to curtail drug addicts and smokers intrusion into the compound.
- iv. Since there are several factors responsible for fire incidents, further studies could be conducted to clarify the sequence or magnitude of each cause of fire outbreak.

## ACKNOWLEDGEMENT

Our special thanks go to the Honourable Commissioner, Ministry of Education and Human Capital Development Kwara State for the approval to assess secondary schools in Ilorin. We also thank the Director and staff of Kwara State Fire Service Headquarters, Ilorin especially the persons of Reverend Gbolahan for his advice and Mr. Issa on schools fire disaster details. We also appreciate all the participants; principals/vice principals in particular Mall. Garba Luqman (IQRA College, Ilorin), teachers, SS 2 students as well as the security men, messengers e.t.c, in all the 18 schools used in this study for their valuable time and information provided which made this study come successful.

## AUTHORS' CONTRIBUTIONS

This work was carried out in collaboration between all authors. Author AEI carried out literature survey, designed the study, data collection and analysis, and wrote the first draft of the

manuscript. Author BAS and Author AAG served as project supervisor and co-supervisor. Author BAS directed action on the first draft. All authors read and approved the final manuscript.

## REFERENCES

**Comment [N5]:** Try to recheck the references and add names of journals/publishers where due to articles/books.

- Abu, J. (2013). Smoking is number one cause of fire outbreak in Ghana. *Ghana News Agency*. March, 18.
- Adamu, M. (2013). Fire disasters, possible way forward. *Managing Emergencies in Nigeria*, pp. 5-7. February, 26
- Adediji, A., Ajayi, B. O., and Olawole, M. O. (2009). Assessment of land-use/cover dynamics in Ilorin and its Environs, Kwara State, Nigeria. *Ilorin Journal of Business and Social Sciences*, 13(1), 1-6.
- Ahmed, Y. A. (2005). Physical problems of urban planning: A case study of Ilorin, Nigeria. *Ilorin Journal of Business and Social Sciences*, 10(2): 202-214
- Akumu, O. M. (2013). *Disaster awareness and preparedness of secondary schools in Homa bay county, Kenya*, (Published *Ph.D* dissertation, University of Nairobi).
- American Society for Quality (2005). *Fishbone diagram*. Retrieved on September 30, 2018 from: <http://www.asq.org/learn-about-quality/cause-analysis-tools/overview/fishbone.html>
- Anyanwu, B. O., Akaranta, O., and Nwaogazie, I. L. (2016). Evaluation of fire safety management in a higher education institution: A case study of university of Port Harcourt. *Archives of Current Research International*, 4(4), 1-13.
- Arson Control Forum ACF, (2006). *Survey of school fires* (Research Bulletin 10). [Online]. Retrieved January, 16, 2018 from [https://www.apea.org.uk/download/Arson\\_Contrtrol\\_Forum\\_Note\\_10.pdf](https://www.apea.org.uk/download/Arson_Contrtrol_Forum_Note_10.pdf)
- Balanced Scorecard Institute (2007). *Basic tools for process improvement: Module 5 – Cause and Effect diagram*. Retrieved on October 4, 2018 from: <http://www.balancedscorecard.org/files/c-eddiag.pdf>

Bartlett, J. E., Kotrlik, J. W., Higgins, C. C. (2001). Organizational research: Determining appropriate sample size in survey research. *Information Technology, Learning, and Performance Journal*, 19(1), 43-50

Brassard, M. (1988). *The memory jogger, a pocket guide of tools for continuous improvement*, pg 24 - 29. Methuen, MA: GOAL/QPC.

Formatted: Font color: Red

Comment [N6]: It must be properly cited

Formatted: Font color: Red

Daily Newspaper (2009). Blaze kills 12 students. *Daily Newspaper*, August 24, Tanzania. Retrieved from <http://www.dailynews.co.tz/>

Gautam, D. (2011). *A needs and a capacity assessment of fire preparedness in the municipalities of Nepal* (Final Report). Available from Ministry of Local Development/GoN, Disaster Risk Reduction at the National Level in Nepal/UNDP. National Disaster Risk-reduction Centre Nepal website: <https://www.ndrcnepal.org/2018/04/a-needs-and-a-capacity-assessment-of-fire-preparedness-in-the-municipalities-of-nepal2011/>

Goel, B. (2014). Stratified sampling. *Regional training course on sampling methods for producing core data items for agricultural and rural statistics, Jakarta, Indonesia* (29 Sep-10 October). Global Strategy for Agriculture and Rural Statistics, I: Statistical Institute for Asia and the Pacific. Retrieved from [http://www.unsiap.or.jp/e-learning/el\\_material/Agri/rap\\_Sampling\\_Indonesia/8\\_M2\\_Stratified%20Sampling.pdf](http://www.unsiap.or.jp/e-learning/el_material/Agri/rap_Sampling_Indonesia/8_M2_Stratified%20Sampling.pdf)  
Accessed on 20/06/2018

Hall, J. R. (2012). *The Smoking-material fire problem*. Fire Analysis and Research Division, National Fire Protection Association: Quincy, MA.

Henrik, K. (2009). Cause-effect diagrams: A pragmatic way of doing root-cause analysis. *Version: 1.1 (September), 1-18*. Available at: <http://www.crisp.se/henrik.kniberg>

Ibileke, J. (2016). Fire razes public school in Edo. (Online). *The PMNEWSNIGERIA*. January, 12. Retrieved on 6<sup>th</sup> December, 2017 from <https://www.pmnewsnigeria.com/2016/01/12/fire-razes-public-school-in-edo>

Ibrahim, R. B., Adetona, N. A. and Oluwatoyin, O. R. (2014). Correlates of urbanization and house rent in Ilorin, Nigeria. *Global Journal of Science and Frontier Research: H Environment and Earth Science*, 14(2): 32-38

Ibrahim, R. B., Bako, A. I., Raheem, W. M., and Abdulyekeen, A. O. (2014). Appraisal of urbanization trend in Ilorin, Nigeria. *Journal of Sustainable Development in Africa*, 16(8): 1-4.

Ilori, A. E. (2017). *Assessment of the causes and the people's behaviour in fire disaster in Birnin Kebbi, Kebbi State, Nigeria*, (Unpublished Master's Project, School of Postgraduate Studies, Ahmadu Bello University, Zaria).

Institute for Healthcare Improvement IHI, (2004). *Process analysis tools: Cause and effect diagram*. Boston, Massachusetts, USA. pg 1-4 Available at: [www.ihl.org](http://www.ihl.org)

Institute for Healthcare Improvement IHI, (2016). *Process analysis tools: Cause and effect diagram*. Boston, Massachusetts, USA. pg 1-2. Available at: [www.ihl.org](http://www.ihl.org)

- Ishikawa, K. (1968). *Guide to Quality Control*. Tokyo, pp. 20, Japan: Asian Productivity Organization.
- Jimoh, A. (2012). *Causes of fire outbreak*. <http://corpersdiary.com> February 5
- Kahwa, R. J. (2009). *Fire emergency preparedness at school: A case study for secondary schools in Morshi rural district, Kilimanjaro region, Tanzania*, (Published Masters dissertation, Department of Agricultural Economics, University of Free State, South Africa). Retrieved on 09/11/2017 from: <http://docplayer.net/2969285-Fire-emergency-preparedness-at-schools-a-case-study-for-secondary-schools-in-moshi-rural-district-kilimanjaro-region-tanzania.html>
- Kirui, J. M. (2009). *Security and safety standards in schools*. Published presentation of Proceedings of secondary schools Heads of Departments' workshop in Western province, Kenya. January and February.
- Kisurulia, S., Katiambo, D. and Lutomia, G. A. (2015). An investigation into the state of disaster and safety preparedness in schools in Kenya. *International Journal of Science and Research (IJSR)*, 4(9), 313-318
- Kwara State Fire Service Headquarters KSFH, (2017). *Secondary schools fire disaster*. Ilorin.
- Kwara State Fire Service Headquarters KSFH, (2019). *Secondary schools fire disaster*. Ilorin.
- Kwara State Ministry of Land and Survey (2017). Map of Ilorin metropolis.
- Ministry of Education and Human Capital Development MOEHCD, (2017). *Kwara state school census report 2015-2016*, (September). Ilorin: Author
- Mohammed, A. (2015). 7 killed, 21 injured as fire razed Govt Girls Kano. Retrieved on 27<sup>th</sup> January, 2018 from <https://www.vanguardngr.com/2015/11/7-killed-21-injured-in-govt-girls-college-kano/>
- Muzungu, M. (2008, May 25). School fire, deaths but real culprits still at large. *The Sunday Standard*, pp. 39.
- National Fire Data Center, NFDC (2007). *Safety issues, safety articles, products, safety tips, safety issues community and forums*. [www.safetyissues.com](http://www.safetyissues.com) Accessed 22/09/2017.
- Nderitu C. N. (2009). *The implementation of safety standards guidelines in secondary schools in Githunguri division Kiambu district*, (Published Master's thesis, Kenyatta University, Kenya).
- Oladokun, V. O., and Emmanuel, C. G. (2014). Urban market fire disasters management in Nigeria: A damage minimization based Fuzzy Logic Model Approach. *International Journal of Computer Applications* 106(17): (0975 – 8887), 106(17), November.
- Oladokun, V. O., and Ishola, F. A. (2010). A risk analysis model for fire disasters in commercial complexes in Nigeria. *Pacific Journal of Science and Technology*, 11(2), 376-386.

**Comment [N7]:** Are these reports? If they are needs to references as such. KSFH 2017/2019 Annual report.....

- Pascal, O. (2006). *Causes of fire outbreaks*. Retrieved on August 3, 2017 from: <http://www.beatthefire.blogspot.com/2006/05/causes-of-fire-outbreaks-fire.html>
- Premium Times (2017). Fire razes female hostels in Nigerian secondary school. (Online). *Premium Times*. November 27. <https://www.premiumtimesng.com/news/more-news/250730-fire-razes-female-hostels-nigerian-secondary-school.html> Accessed on December 4, 2017
- Public Health Infrastructure (2008), Fishbone (Ishikawa) Diagram (Example). Accessed on November 13, 2018 from: <http://www.phf.org/infras.html>
- Punch Newspaper (2017). 80 students escape death in Sokoto. Retrieved on 27<sup>th</sup> July, 2018 from <https://punchng.com/80-students-escape-death-in-sokoto/>
- Rubaratuka, I. A. (2013). Investigation of provisions of fire safety measures in buildings in Dar es Salaam. *International Journal of Engineering and Applied Sciences*, 4(4), 40-45.
- Shibutse, P. I., Omuterema, S., and China, S. (2014a). Causes of Fire Disasters in Secondary Schools in Kenya, *Research on Humanities and Social Sciences*, 4(25), 66-70.
- Shibutse, P. I., Omuterema, S., and China, S. (2014b). Frequency and severity of fire disasters in secondary schools in Kenya, *International Journal of Innovative Research in Science, Engineering and Technology*, 3(11), 17646-17650.
- Shittu, A. A., Idiake, J. E., and Akanmu, W. P.(2015). Relationship between Cost of Fire Incidence and Capital Expenditure in Kwara State. *International Engineering Conference*, FUT, Minna. pp 243-250.
- Simpson, D. E. (2010). Fire protection and safety. *A presentation of Ghana National Fire Service (GNFS) Ashanti Regional office at a Symposium of Building Technology Students Society (BTSS) Week celebration*, Kwame Nkrumah University of Science and Technology (KNUST), Kumasi, 24-27 March.
- Tarun, K. B. (2012). Application of fishbone analysis for evaluating supply chain and business process: A case study on the St James Hospital. *International Journal of Managing Value and Supply Chains (IJMVSC)*, 3(2), June. [www.doi:10.5121/ijmvsc.2012.3202](http://www.doi:10.5121/ijmvsc.2012.3202)
- The Independent Newspaper (2001). Twenty three die in Nigeria high school dormitory blaze. [Online]. *The Independent*. March, 8. Retrieved from: <https://www.independent.co.uk/news/world/africa/twenty-three-die-in-nigerian-high-school-dormitory-blaze-5366106.html> Accessed on 14 June 2017
- Tolofari, M. (2010). Fire outbreak in Nigeria. *The Tidenews*. (Online). December, 24. Retrieved on September 2, 2017 from: <http://www.thetidewsonline.com/2010/12/24/fire-outbreaks-in-nigeria/>
- Usman, B. A., Malik, N. A., and Alausa, K. M. (2015). Factors determining the choice of residential location in Ilorin, Nigeria. *Zaria Geographer*, 22(1), 109-122.

Vivek A. D. (2008). Cause-and-effect diagram for a teaching learning process (CEDTLP): A case study. *Industrial Engineering Journal*, 1(2), 41-42.